



Shower - Tara.

Shower mixer for wall-mounted installation - polished chrome

Article number: 26 100 892-00



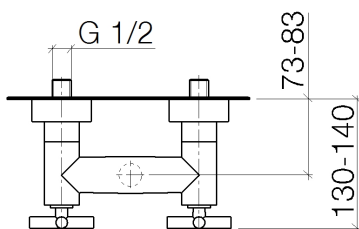
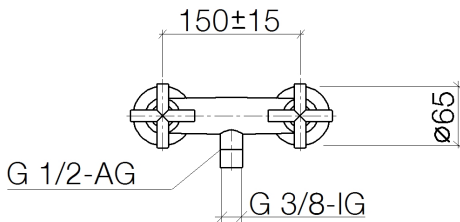
- 3/8" female or 1/2" male connection
- Flanges Ø 2-1/2"
- 1/2" connection
- Center to center 5-7/8" ± 6"
- Fittings group in compliance with DIN 4109: 1
- NOTE: Local building codes may require the use of an anti-scald device. Please refer to remote pressure balance valve (35 910 970 90)
- Internal backflow preventer.
- For combination with slide bar set



polished chrome

Accessory is required for this item.

Dimensional drawing



All dimensions in mm / inch = mm x 0,0394

Model/program/technical modifications and error excepted
For more information see: www.dornbracht.com + 49 (0) 2371 433-460 mail@dornbrachtgroup.de

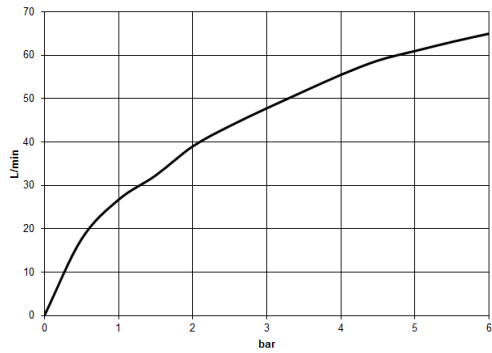


Shower - Tara.

Shower mixer for wall-mounted installation - polished chrome

Article number: 26 100 892-00

Flow rate chart





Shower - Tara.

Shower mixer for wall-mounted installation - polished chrome

Article number: 26 100 892-00

Other surface finishes



platinum matte
26 100 892-06



platinum
26 100 892-08



Dark Brass matte
26 100 892-16



Dark Bronze matte
26 100 892-17



black matte
26 100 892-33



Dark Platinum matte
26 100 892-99

More custom finish options are available via special production (xTra Service). Please see our finish matrix for availability and pricing or contact a Dornbracht representative.

Required article



35 080 970-90 0010

Rough-in adapter -



Shower - Tara.

Shower mixer for wall-mounted installation - polished chrome

Article number: 26 100 892-00

Spare parts list

Number	Item Number	Designation	Number of units
--------	-------------	-------------	-----------------

